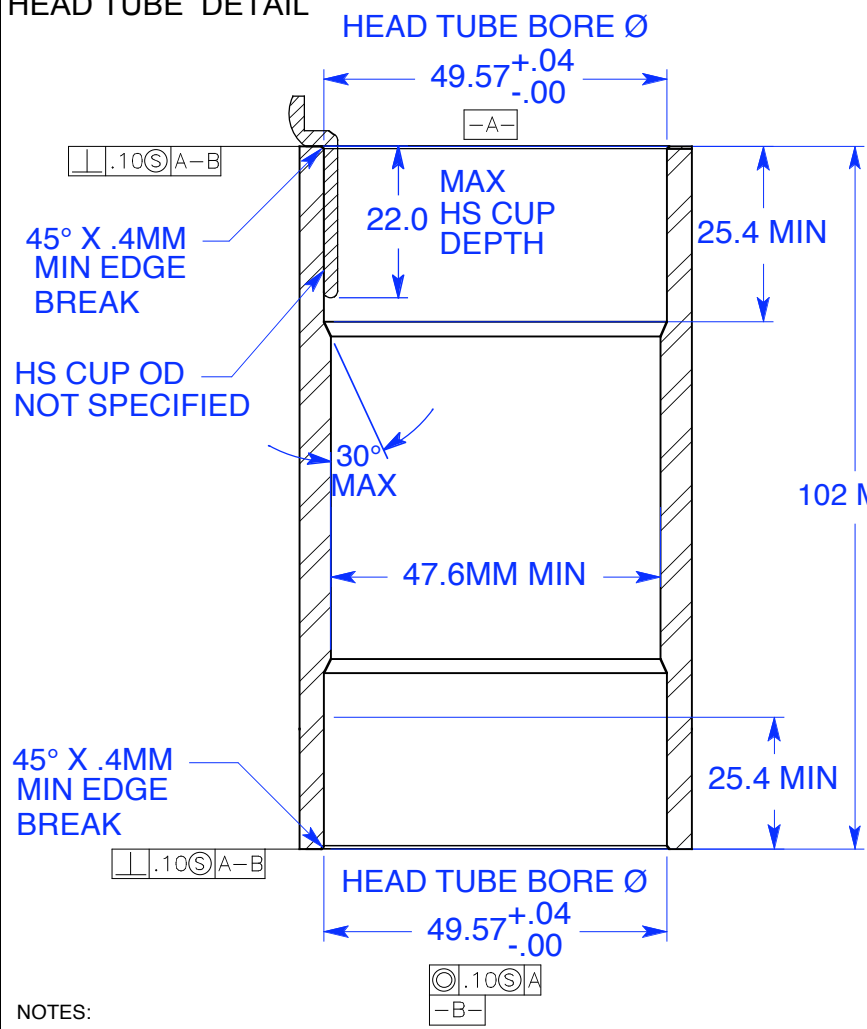
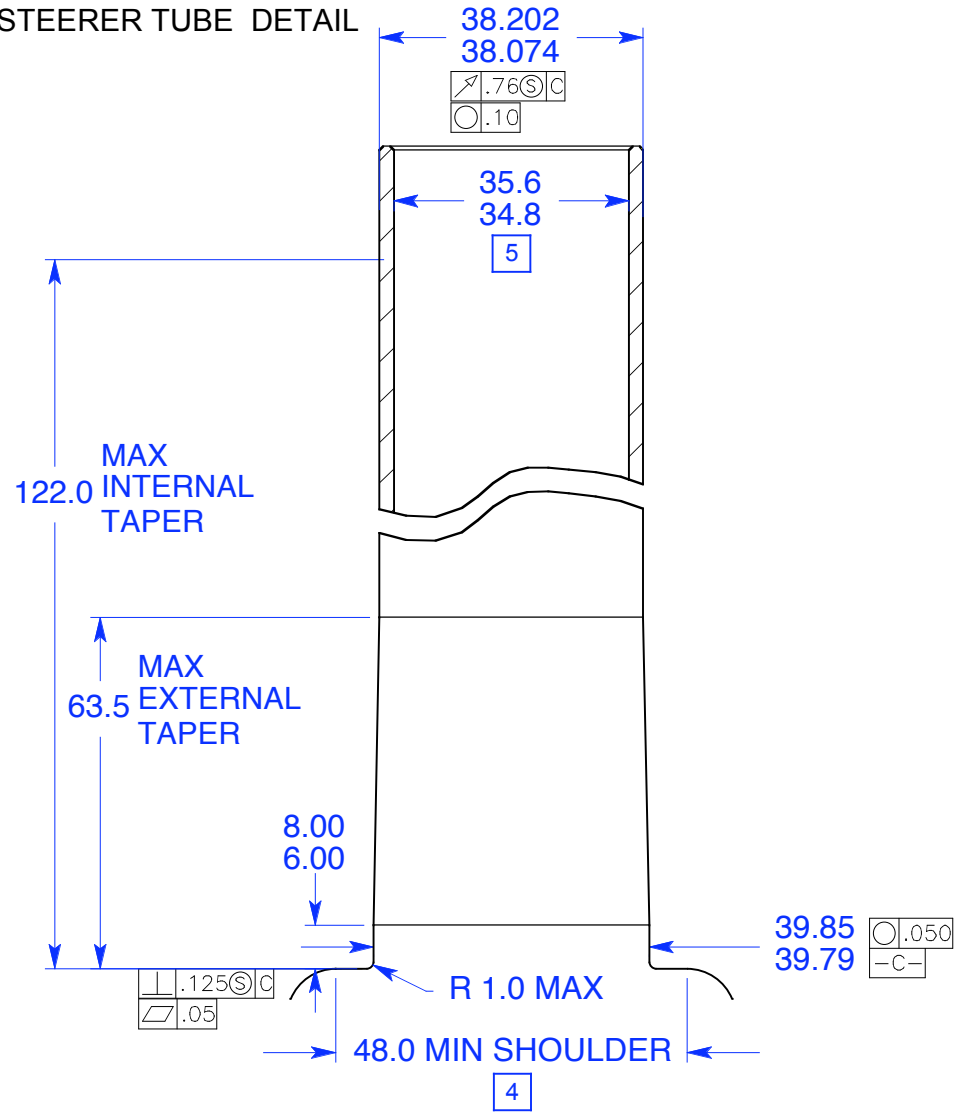


REVISIONS		
REV.	DATE	CHANGES

HEAD TUBE DETAIL



STEERER TUBE DETAIL



NOTES:

- 5. RECOMMENDATION FOR PROPER FIT OF COMMON AXIAL PRELOAD DEVICE ONLY
- 4. IF THE CROWN SHOULDER IS GREATER THAN Ø 2.10", AT LEAST 2 CROWN RACE REMOVAL FEATURES MUST BE PROVIDED.
- 3. LOWER HEADSET STACK HEIGHT = 0.50"-0.67"
- 2. ALL DIMENSIONS ARE POST WELD, POST HEAT TREAT, POST PAINT/COATING
- 1. ALL DIMENSIONS AND TOLERANCES SHOWN ARE FOR PROPER HEADSET FIT AND FUNCTION ONLY. THESE DIMENSIONS AND TOLERANCES DO NOT TAKE THE PLACE OF PROPER FRAME, HEADSET OR STEERER DESIGN.

UNLESS OTHERWISE SPECIFIED:	DATE	NAME	ONE POINT FIVE INTERFACE STANDARD	
	4/2/02			
DIMENSIONS IN MILLIMETERS		PART NUMBER	REV	
.X±2.5 .XX±.25 .XXX±.13		METRIC UNITS	3	
		SIZE	SCALE	SHEET
		A	NONE	1 OF 1